



PROGRAMMES AFTER 10+2 (FEE & SCHOLARSHIP DETAILS)

DISCIPLINES

Engineering | Computer Applications | Management | Economics | Law | Hotel Management & Tourism | Biotechnology | Microbiology | Forensic Sciences | Agriculture | Food Technology | Nutrition & Dietetics | Botany | Zoology | Chemistry | Physics | Mathematics | Commerce | Architecture | Planning | Fashion Design | Product & Industrial Design | Interaction Design | Multimedia & Animation | Interior & Furniture Design | Journalism & Mass Communication | Film & TV Production | Fine Arts | Performing Arts | Political Science | Geography | Psychology | Public Administration | Sociology | Arts (Humanities) | English & Foreign Languages | Library Science | Indian Languages | Education | Physical Education | Pharmaceutical Sciences | Ayurvedic Pharmaceutical Sciences | Medical Laboratory Sciences | Physiotherapy

LPU SCHOLARSHIP & FINANCIAL AID SCHEME

Lovely Professional University strongly believes that monetary constraints should not be an obstacle for a student to have access to quality education. So the university offers lucrative Scholarship in more than 150 programmes of the University, ranging from Diploma Programmes to Ph.D. The scheme is as under:

- Scholarship Categories:** Scholarships are awarded to candidates based on their performance/fulfilling the eligibility criteria on any of the following categories:
 - On the basis of **Eligibility Qualification** (for example 10+2 for Under Graduate Programmes)
 - On the basis of LPU's Entrance and Scholarship Test : LPUNEST
 - On the basis of **National Level Entrance Tests** [CUET, JEE (Main), NCHM JEE, NEET, UCEED, CLAT, NATA, NID DAT (Prelims), NIFT, NIFT (B.FTech.)]
 - On the basis of **Performance in Cultural, R&D and Co-Curricular Activities.**
- Scholarship Brackets:** For each category mentioned, three brackets of Scholarship (Bracket 1, 2 and 3) are defined. Each bracket has its own respective criteria which needs to be met for availing the applicable scholarship. Therefore, the students meeting the requirement of Bracket- 1 gets the highest Scholarship and those in Bracket - 2 or 3 gets relatively lesser scholarship.
- Scholarship Phases:** Admissions in LPU are done in different Phases, which are bifurcation of the Admission time period. The amount of Scholarship also depends on the Phase in which the candidate takes admission in the University. **Phase - I** starts as early as **December 2023** and continues till the end of **April 2024**. The subsequent phases are conducted only if the seats in the concerned Programme remain vacant. The amount of Scholarship reduces with each passing phase and no Scholarship is offered in subsequent phases (if conducted). The dates for Phases (if offered) will be updated on the university website (www.lpu.in).
- Amount of Scholarship in different Brackets for Phase-I**

The Scholarship amount/ percentage varies from programme to programme as per the following classification :

Table 1 - B.Tech. (CSE - AI and Data Engineering) | B.Tech. (CSE - Software Product Engineering) programmes.

Table 2 - B.Tech. - (CSE)/ B.Tech. (CSE) [2+2 with international credit transfer option] | B.Tech. CSE- Data Science with ML | B.Tech. (CSE - DevOps (Software Development and IT Operations) | B.Tech. (CSE- Cloud Computing) | B.Tech. (CSE - User Experience (UX) / User Interface (UI) | B.Tech. (CSE - Big Data Analytics) | B.Tech. (CSE - Decision Science and Machine Learning | B.Tech. (CSE – Artificial Intelligence and Machine Learning) | B.Tech. (Hons.) (CSE - Data Science and Data Engineering)| B.Tech. (Hons.) (CSE- Cyber Security and Block Chain) | B.Tech. (Hons.) (CSE- Full Stack Software Development) | BCA, BCA (Big Data Analytics) | BCA (Hons.) (Cyber Security) | B.Sc. (Hons.) (Computer Science - Cyber Security) | B.Sc. (IT)/ B.Sc. (IT) [2+2 with international credit transfer option] | B.Sc. (Hons.) Botany | B.Sc. (Botany) | B.Sc. (Hons.) Zoology | B.Sc. (Zoology) | B.Sc. (Hons.) Physics | B.Sc. (Physics) | B.Sc. (Hons.) Chemistry | B.Sc. (Chemistry) | B.Sc. (Hons.) Mathematics | B.Sc. (Mathematics) | BBA/ BBA [2+2 with international credit transfer option] | Integrated BBA-MBA | BBA (Hons.) | BBA (Financial Markets) | BBA (IT) | BBA (International Finance) | BBA (Business Analytics) | B.Sc. (Culinary Arts)/ B.Sc. (Culinary Arts) [2+2 with international credit transfer option] | B.Sc. (Design - Interior and Furniture) | B.Design (Interior and Furniture) | B.Design (Product and Industrial) | B.Design (User Experience) | B.Sc (Design - Fashion) | B.Design (Fashion)/ B.Design (Fashion) [2+2 with international credit transfer option] | B.Design (Fashion Management & Communication Design) | B.Sc. (Design - Multimedia) | B.Design (Multimedia) | B.Sc. (Design -Graphics) | B.Design (Graphics) | B.Sc. (Design -Gaming)| B.Design (Gaming) | B.Sc. (Film and TV Production) | B.Design (Film and TV Production) | B.A. LL.B.(Hons.) | BBA LL.B. (Hons.) | B.A. (Journalism and Mass Communication) | B.A. (Hons.) | B.Pharm programmes.

Table 3 - B.Sc. (Hons.) Agriculture | B.Sc. (Forensic Science) | B.Sc. (Hons.) Food Technology | B.Sc. Food Technology | B.Sc. (Nutrition and Dietetics) | B.Sc. (Hons.) Biotechnology | B.Sc. Biotechnology| B.Sc. (Hons.) Microbiology | B.Sc. Microbiology | B.Com./ B.Com [2+2 with international credit transfer option]| B.Com. (Hons.) | B.Com. (Management Accounting and International Finance)| B.Sc. (Hons.) Economics | B.Sc. (Bakery & Pastry Management) | Bachelor of Tourism & Travel Management (BTTM) | B.A. (Fine Arts) | Bachelor of Fine Arts (BFA) | B.Sc. (Health and Physical Education) | Bachelor of Physical Education and Sports (BPES) | Bachelor of Physiotherapy (BPT) | B.Sc. (Medical Laboratory Technology) programmes.

Table 4 - B.Tech. - all branches/ B Tech. [2+2 with international credit transfer option] (Except CSE) | B.Tech. (Robotics and Automation) | B.Tech. (ECE-IOT), Bachelor of Hotel Management and Catering Technology (BHMCT) | Bachelor of Hotel Management and Catering Technology (BHMCT) [2+2 with international credit transfer option] | B.Sc. (Hotel Management) | B.Sc. (Airlines, Tourism and Hospitality) | BBA (Tourism and Hospitality) | BBA (Airlines and Airport Management) | B.Arch. | B.Plan. | B.A. (Music Vocal/ Theatre) | BPA (Music Vocal/ Theatre) | Bachelor of Arts (B.A.) | Diploma in Library and Information Sciences programmes.

Table 1			
	Bracket-1	Bracket-2	Bracket-3
Phase-I	20%	15%	10%

Table 2			
	Bracket-1	Bracket-2	Bracket-3
Phase-I	30%	25%	20%

Table 3			
	Bracket-1	Bracket-2	Bracket-3
Phase-I	40%	35%	30%

Table 4			
	Bracket-1	Bracket-2	Bracket-3
Phase-I	50%	45%	40%

To know the fee after scholarship for different programmes, refer the 'Fee Table' mentioned at the last page.

The scholarship mentioned above is for Phase-I only. Subsequent phases of admission will be conducted if seats remain vacant. The scholarship details for these subsequent phases can be referred from the university website: www.lpu.in

5. Details of Scholarship Brackets

Scholarship brackets for various categories as mentioned in point no. (1 and 2) is detailed below:

(i) On the basis of Percentage in Qualifying Exam:

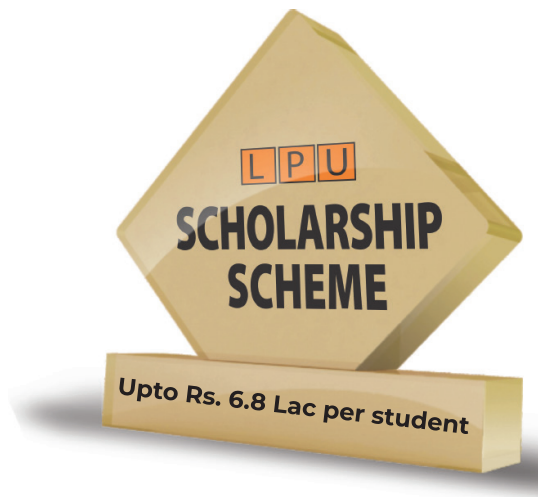
- **Bracket 1** - Students scoring equal to or more than 95% marks in eligibility qualification falls in Bracket - 1 and are thus eligible for Scholarship mentioned in Bracket-1 of Table-1, 2, 3 & 4 in Phase-I (for applicable scholarship of each programme, refer programmes mentioned in Table-1, 2, 3 and 4).
- **Bracket 2** - Students scoring between 90% to 94.99% marks in eligibility qualification falls in Bracket-2 and are thus eligible for Scholarship mentioned in Bracket-2 of Table-1, 2, 3 & 4 in Phase-I (for applicable scholarship of each programme, refer programmes mentioned in Table -1, 2, 3 and 4).
- **Bracket 3** - Students scoring between 80% to 89.99% marks in eligibility qualification falls in Bracket-3 and are thus eligible for Scholarship mentioned in Bracket-3 of Table-1, 2, 3 & 4 in Phase-I (for applicable scholarship of each programme, refer programmes mentioned in Table-1, 2, 3 and 4).
- **For Lateral Entry Programmes** - Scholarship will be offered on the basis of eligibility qualification. For example, someone seeking admission in B.Tech. [Lateral Entry] can seek scholarship on the basis of Diploma (eligibility qualification).

(ii) On the basis of LPUNEST:

For each Scholarship bracket, cut-offs are determined by the University and accordingly the Scholarship amount/ percentage varies as mentioned in **Table 1, 2, 3 and 4**. To know the tentative cut-off for various programmes and approximate number of students falling in different categories, refer university website www.lpu.in

(iii) On the basis of National Level Entrance Tests:

- Performance in the following National Level Entrance Tests is considered for offering Scholarship in LPU:
 - JEE (Main), NCHM JEE, NEET, UCEED, CLAT, NATA, NID DAT (Prelims), NIFT, NIFT (B.FTech.), CUET.
 - For every test mentioned above, LPU has determined the cut-offs for various Scholarship brackets. To know the cut-offs for other National Level Entrance Tests, refer university website www.lpu.in



6. Other Scholarships/ Financial Aid offered by the University

Apart from the scholarship on the basis of LPUNEST-2024 or Qualifying Examination explained above, LPU also offers scholarships and financial aid in the following areas:

- Scholarship on the basis of Performance in Innovation, Startup, Entrepreneurship and Hackathons.
- Scholarship on the basis of Performance in Sports.
- Scholarship on the basis of Performance in Cultural, R&D and Co-Curricular Activities.
- Scholarship on the basis of Performance in Social Service and Bravery Awards.
- Special Scholarship for Topper of Education Board.
- Financial Aid - Need Based.
- Financial Aid for Serving/ Retired Defence/ CAPF/ Para-Military Personnel and their dependents.
- Financial Aid to Orphan Applicants.
- Financial Aid to Persons with Certain Disability.

For details regarding scholarship, refer university website i.e. www.lpu.in

UNDERGRADUATE ENGINEERING PROGRAMMES

- B.Tech.
- B.Tech. (Hons.)#
- B.Tech. [CSE - DevOps (Software Development and IT Operations)] [in tie-up with Xebia]
- B.Tech. (CSE - Data Science with ML) [in tie-up with upGrad]
- B.Tech. (CSE - Artificial Intelligence and Machine Learning)
- B.Tech. (CSE - AI and Data Engineering) [in tie-up with Futureense Technologies]
- B.Tech. (CSE - Software Product Engineering) [in tie-up with KALVIUM]
- B.Tech. (CSE - Big Data Analytics) [in tie-up with IBM]
- B.Tech. (CSE - Decision Science and Machine Learning) [in tie-ups with Quantiphi]
- B.Tech. (CSE - Cloud Computing) (in tie-up with Google Cloud)
- B.Tech. [CSE - User Experience (UX)/ User Interface (UI)] [in tie-up with IMAGINXP]
- B.Tech. (CSE - Industry Immersion)
- B.Tech. (Hons.) (CSE- Data Science and Data Engineering) [in tie-up with TRANSORG ANALYTICS]
- B.Tech. (Hons.) (CSE- Cyber Security and Block Chain) [in tie-up with CompTIA]
- B.Tech. (Hons.) (CSE- Full Stack Software Development) [in tie-up with GeeksforGeeks]
- B.Tech. (ECE - IoT) [in tie-up with Intel]
- B.Tech. (AE - Electric Vehicle Design) [in tie-up with Siemen]
- B.Tech. [2+2 with International Credit Transfer Option]*

and many more....

Streams/ Majors Offered in Engineering

LPU is offering not only conventional engineering streams/ majors but also one of its kind trend setting streams/ majors transforming engineering education to leap into the next leg of technology upbeat.

Examine the streams/majors given below to determine which engineering concentrations appeal to you:

- | | |
|---|--|
| 1. Electronics and Communication Engineering (ECE)* | 9. Civil Engineering (CE)* |
| 2. Computer Science and Engineering (CSE)** | 10. Electrical Engineering (EE) |
| 3. Information Technology (IT) | 11. Electrical and Electronics Engineering (EEE) |
| 4. Mechanical Engineering (ME)* | 12. Biotechnology (BT)* |
| 5. ME - Mechatronics* | 13. Food Technology |
| 6. Aerospace Engineering | 14. Biomedical Engineering |
| 7. Automobile Engineering (AE)* | 15. Chemical Engineering (CHE) |
| 8. Robotics and Automation | |

#offered in CSE only. For stream details, refer university website:www.lpu.in

| *option offered in the mentioned streams

WHY GRADUATION FROM LPU?



LPU Receives Highest NAAC Grade

The University has achieved high rankings across various parameters from esteemed international and national bodies. LPU stands tall as the 1st among all private universities in India, receiving the highest NAAC grade A++ with an exceptional 3.68 score on a scale of 4.

High Average Salaries at top brands

Big brands, high average salaries and lucrative careers in Placement with 2000+ unique companies like Google, Microsoft etc.



Students from all states and 40+ countries of the world

LPU has 30000+ students from all the states of India and from 40+ different countries across the world.

Industry led Curriculum

Curriculum at LPU is developed in complete consultation with industry and is taught by highly rated faculty/ Industry professionals.



Design your degree

Find your niche, follow your passion and craft your career in the academic field of your interest with unique combinations of 100+ majors and minors, interdisciplinary curriculum, career pathways.

A vibrant campus

LPU has 100+ active student led clubs/ organisations and conducts more than 500 competitions/ events from sports to co-curricular every year.



Business Incubation

With 70+ start-ups incubated, 100+ events focussing on entrepreneurship, students at LPU are encouraged and inspired to pursue their entrepreneurial passion.

State of the art Labs, Stadiums, Auditoriums & Residential complex

A vibrant campus with 90 lakh sq.ft. covered area, top lab infrastructure, largest residential capacity, mall, ultra-modern sports facilities, innovation studio, safe and secure campus, student activity centre and a lot more to make it world class.

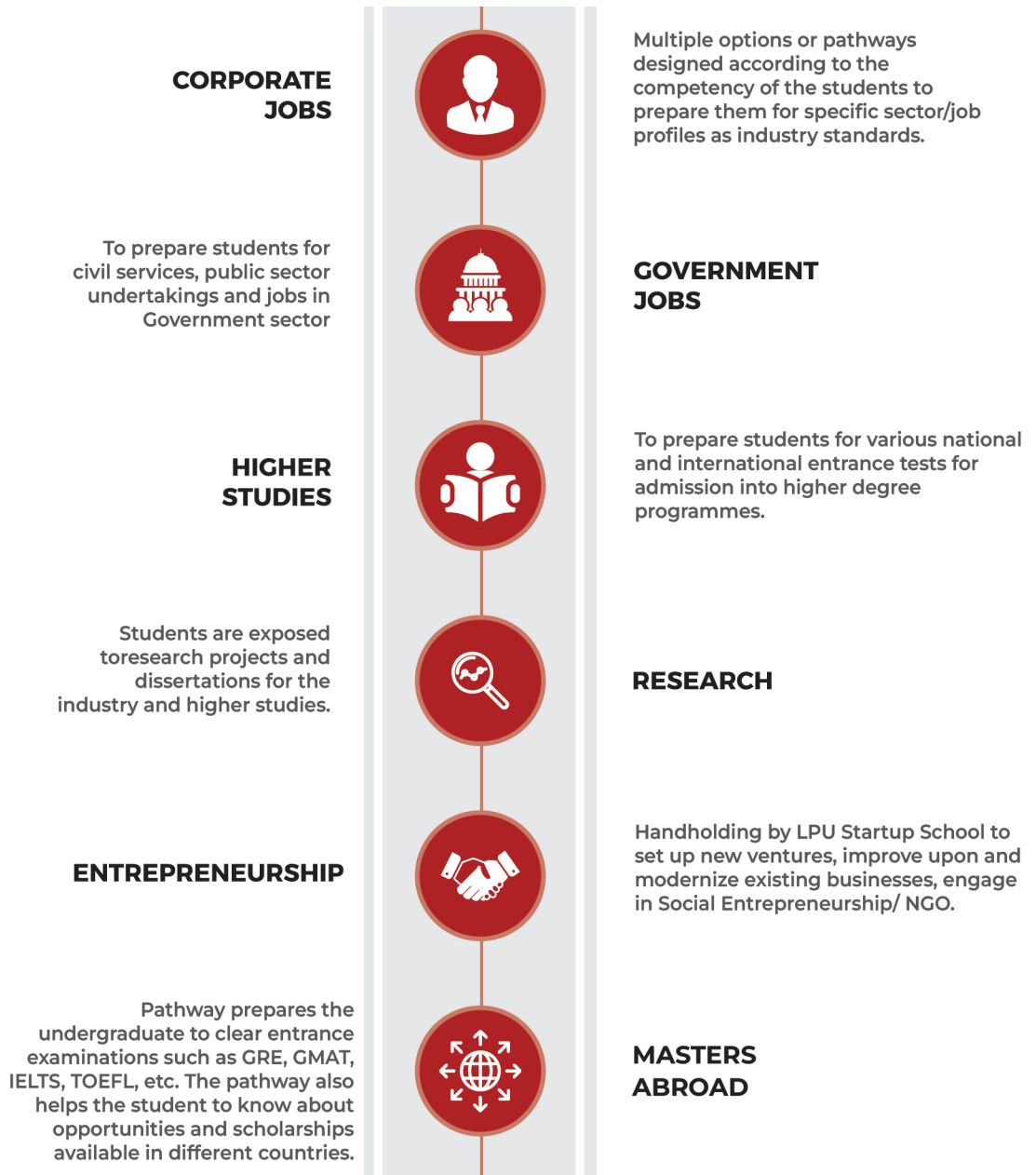


Host to multiple heads of nations

LPU has been the host to heads of seven nations, governors of many States, ambassadors of different nations and, various central and state cabinet ministers.

CAREER PATHWAYS

As each individual is unique and approaches life in a different manner, so we allow each of them to choose his/her career pathways based on individual interest to prepare for life :



INDUSTRIAL TIE-UPS

For Hands-on practical training and certifications in collaborations with few top brands of world are mentioned below.



and many more...

For further information visit university website: www.lpu.in

FEE TABLE [Programmes After 12th (10+2)]

The following table lists the fee after different Scholarship percentages (20%, 30%, 40%, 50% etc.) and these percentages vary with Phases of Admissions. To know the details of Phases and Scholarship bracket applicable, refer Scholarship Scheme as detailed on initial pages of this brochure.

The fee & scholarship mentioned below is for Phase-I only. Subsequent phases of admission will be conducted if seats remain vacant. The fee & scholarship details for these subsequent phases can be referred from the university website www.lpu.in

After 10+2 Programmes	Programme Fee# (per sem.)	Applicable fees after Scholarship (per sem. in ₹) as mentioned below		
		After 20% scholarship	After 15% scholarship	After 10% scholarship
ENGINEERING - CSE				
B.Tech. (CSE - AI and Data Engineering)	200000	160000	170000	180000
B.Tech. (CSE - Software Product Engineering)	200000	160000	170000	180000
After 10+2 Programmes	Programme Fee# (per sem.)	Applicable fees after Scholarship (per sem. in ₹) as mentioned below		
		After 30% scholarship	After 25% scholarship	After 20% scholarship
ENGINEERING				
B.Tech. - (CSE)/ B Tech (CSE) [2+2 with international credit transfer option]	140000	98000	105000	112000
B.Tech. CSE- Data Science with ML	170000	119000	127500	136000
B.Tech. (CSE - DevOps (Software Development and IT Operations)	170000	119000	127500	136000
B.Tech. (CSE- Cloud Computing)	170000	119000	127500	136000
B.Tech. [CSE - User Experience (UX)/ User Interface (UI)]	170000	119000	127500	136000
B.Tech. (CSE - Big Data Analytics)	170000	119000	127500	136000
B.Tech. (CSE - Decision Science and Machine Learning)	170000	119000	127500	136000
B.Tech. (CSE – Artificial Intelligence and Machine Learning)	170000	119000	127500	136000
B.Tech. (Hons.) (CSE - Data Science and Data Engg.)	200000	140000	150000	160000
B.Tech. (Hons.) (CSE- Cyber Security and Block Chain)	200000	140000	150000	160000
B.Tech. (Hons.) (CSE- Full Stack Software Development)	200000	140000	150000	160000
COMPUTER APPLICATIONS				
BCA	80000	56000	60000	64000
BCA (Big Data Analytics) in tie-up with IBM	100000	70000	75000	80000
BCA (Hons.) (Cyber Security)	120000	84000	90000	96000
B.Sc. (Hons.) (Computer Science - Cyber Security)	120000	84000	90000	96000
B.Sc. (IT)	80000	56000	60000	64000
B Sc (IT) [2+2 with international credit transfer option]	80000	56000	60000	64000
BOTANY/ ZOOLOGY				
B.Sc. (Hons.) Botany/ B.Sc. (Botany)	50000	35000	37500	40000
B.Sc. (Hons.) Zoology / B.Sc. (Zoology)	50000	35000	37500	40000

After 10+2 Programmes	Programme Fee# (per sem.)	Applicable fees after Scholarship (per sem. in ₹) as mentioned below		
		After 30% scholarship	After 25% scholarship	After 20% scholarship
PHYSICS/ CHEMISTRY/ MATHEMATICS				
B.Sc. (Hons.) Physics / B.Sc. (Physics)	50000	35000	37500	40000
B.Sc. (Hons.) Chemistry/ B.Sc. (Chemistry)	50000	35000	37500	40000
B.Sc. (Hons.) Mathematics	50000	35000	37500	40000
B.Sc. (Mathematics)	50000	35000	37500	40000
MANAGEMENT				
BBA/ BBA [2+2 with international credit transfer option]	80000	56000	60000	64000
Integrated BBA-MBA	120000	84000	90000	96000
BBA (Hons.)	120000	84000	90000	96000
BBA (Financial Markets)	100000	70000	75000	80000
BBA (IT)	80000	56000	60000	64000
BBA (International Finance)	100000	70000	75000	80000
BBA (Business Analytics)	100000	70000	75000	80000
HOTEL MANAGEMENT AND TOURISM				
B.Sc.(Culinary Arts)/ B.Sc. (Culinary Arts) [2+2 with international credit transfer option]	100000	70000	75000	80000
INTERIOR AND FURNITURE DESIGN				
B.Sc. (Design - Interior and Furniture)	120000	84000	90000	96000
B.Design (Interior and Furniture)	120000	84000	90000	96000
PRODUCT AND INDUSTRIAL DESIGN				
B.Design (Product and Industrial)	120000	84000	90000	96000
INTERACTION DESIGN (UI/UX)				
B.Design (User Experience)	120000	84000	90000	96000
FASHION DESIGN				
B.Sc (Design - Fashion)	120000	84000	90000	96000
B.Design (Fashion Management & Communication Design)	120000	84000	90000	96000
B.Design (Fashion)/ B Design (Fashion) [2+2 with international credit transfer option]	120000	84000	90000	96000
MULTIMEDIA AND ANIMATION				
B.Sc. (Design - Multimedia)	120000	84000	90000	96000
B.Design (Multimedia)	120000	84000	90000	96000
B.Sc. (Design -Graphics)	120000	84000	90000	96000
B.Design (Graphics)	120000	84000	90000	96000
B.Sc. (Design -Gaming)	120000	84000	90000	96000
B.Design (Gaming)	120000	84000	90000	96000

After 10+2 Programmes	Programme Fee# (per sem.)	Applicable fees after Scholarship (per sem. in ₹) as mentioned below		
		After 30% scholarship	After 25% scholarship	After 20% scholarship
JOURNALISM AND FILM PRODUCTION				
B.Sc. (Film and TV Production)	120000	84000	90000	96000
B.Design (Film and TV Production)	120000	84000	90000	96000
B.A. (Journalism and Mass Communication)	80000	56000	60000	64000
LAW				
B.A., LL.B.(Hons.)	120000	84000	90000	96000
BBA, LL.B. (Hons.)	120000	84000	90000	96000
ARTS (HUMANITIES)				
B.A. (Hons.)	50000	35000	37500	40000
PHARMACEUTICAL SCIENCES				
B.Pharm.	120000	84000	90000	96000
After 10+2 Programmes	Programme Fee# (per sem.)	Applicable fees after Scholarship (per sem. in ₹) as mentioned below		
		After 40% scholarship	After 35% scholarship	After 30% scholarship
AGRICULTURE				
B.Sc. (Hons.) Agriculture	120000	72000	78000	84000
FORENSIC SCIENCE				
B.Sc. (Forensic Science)	80000	48000	52000	56000
FOOD TECHNOLOGY				
B.Sc. (Hons.) Food Technology/ B.Sc. Food Technology	80000	48000	52000	56000
NUTRITION AND DIETETICS				
B.Sc. (Nutrition and Dietetics)	80000	48000	52000	56000
BIOTECHNOLOGY				
B.Sc. (Hons.) Biotechnology/ B.Sc. Biotechnology	80000	48000	52000	56000
MICROBIOLOGY				
B.Sc. (Hons.) Microbiology/ B.Sc. Microbiology	80000	48000	52000	56000
COMMERCE				
B.Com./ B.Com [2+2 with international credit transfer option]	80000	48000	52000	56000
B.Com. (Hons.)	120000	72000	78000	84000
B.Com. (Management Accounting and International Finance)	100000	60000	65000	70000
ECONOMICS				
B.Sc. (Hons.) Economics	80000	48000	52000	56000
FINE ARTS				
B.A. (Fine Arts)	50000	30000	32500	35000
Bachelor of Fine Arts (BFA)	50000	30000	32500	35000
HOTEL MANAGEMENT				
B.Sc. (Bakery and Pastry Management)	100000	60000	65000	70000
Bachelor of Tourism and Travel Management (BTTM)	100000	60000	65000	70000

After 10+2 Programmes	Programme Fee# (per sem.)	Applicable fees after Scholarship (per sem. in ₹) as mentioned below		
		After 40% scholarship	After 35% scholarship	After 30% scholarship
PHYSICAL EDUCATION				
B.Sc. (Health and Physical Education)	50000	30000	32500	35000
Bachelor of Physical Education and Sports (BPES)	50000	30000	32500	35000
PHYSIOTHERAPY				
Bachelor of Physiotherapy (BPT)	80000	48000	52000	56000
MEDICAL LABORATORY SCIENCES				
B.Sc. (Medical Laboratory Technology)	80000	48000	52000	56000
After 10+2 Programmes	Programme Fee# (per sem.)	Applicable fees after Scholarship (per sem. in ₹) as mentioned below		
		After 50% scholarship	After 45% scholarship	After 40% scholarship
ENGINEERING				
B.Tech. - all branches / B.Tech. [2+2 with international credit transfer option]	140000	70000	77000	84000
B.Tech. (Robotics and Automation)	170000	85000	93500	102000
B.Tech. (ECE-IOT)	170000	85000	93500	102000
HOTEL MANAGEMENT AND TOURISM				
Bachelor of Hotel Mgt. and Catering Technology (BHMCT)/ Bachelor of Hotel Mgt and Catering Technology (BHMCT) [2+2 with international credit transfer option]	80000	40000	44000	48000
B.Sc. (Hotel Management)	80000	40000	44000	48000
B.Sc. (Airlines, Tourism and Hospitality)	80000	40000	44000	48000
BBA (Tourism and Hospitality)	80000	40000	44000	48000
BBA (Airlines and Airport Management)	80000	40000	44000	48000
ARCHITECTURE				
B.Arch.	120000	60000	66000	72000
PLANNING				
B. Plan.	120000	60000	66000	72000
PERFORMING ARTS				
B.A. (Music Vocal/ Theatre)	50000	25000	27500	30000
BPA (Music Vocal/ Theatre)	50000	25000	27500	30000
ARTS (HUMANITIES)				
Bachelor of Arts (B.A.)	50000	25000	27500	30000
LIBRARY SCIENCES				
Diploma in Library and Information Sciences	50000	25000	27500	30000
EDUCATION				
Integrated B.A.- B.Ed.	30000			
Integrated B.Sc.- B.Ed.				

#Examination Fee - Rs. 4000 per semester

***Note:** Fee and structure may change with the phases of scholarship. Kindly refer to the website for exact scholarship.

Certain programmes may not offer any scholarships. To know more, visit our website or contact our admission office.

Times Higher Education Impact Rankings 2023



RANKS LPU
2nd
IN INDIA
(Amongst Both Government & Private Universities)
Worldwide - 101-200 Band

Subject wise LPU rankings in India as per
TIMES HIGHER EDUCATION WORLD UNIVERSITY RANKINGS 2023

2nd
in **BUSINESS & ECONOMICS**
(World Wide 401-500 Band)

6th
in **ENGINEERING**
(World Wide 401-500 Band)

8th
in **CLINICAL & HEALTH**
(World Wide 501-600 Band)

9th
in **COMPUTER SCIENCE**
(World Wide 401-500 Band)



WURI | The WORLD UNIVERSITY RANKINGS for INNOVATION Rankings 2023

RANKS LPU
3rd
IN INDIA
In the band of 100-200
in Global Top Innovative Universities



THE World University Rankings 2023

Times Higher Education Ranking is the World's Most Prestigious University Ranking System

RANKS LPU
23rd
Amongst Top Universities of India
(World Wide - 800-1000 Band)

LPU RECEIVES HIGHEST NAAC GRADE

National Assessment & Accreditation Council (NAAC) is an Autonomous Institution of the University Grants Commission (UGC),

Ministry of Education, Govt. of India



NAAC GRADE

A++

With 3.68 Score on 4 Point Scale

Highest Score in 1st Cycle of Accreditation Amongst All Government and Private Universities*

Highest Score

amongst all Dual Mode Universities of India
(both Govt. and Private)*

Highest Score

amongst all the State
Private Universities of India*

*Based on collation of information related to accredited institutions available on NAAC website www.naac.gov.in as on 17th August 2023



LOVELY
PROFESSIONAL
UNIVERSITY

Transforming Education Transforming India

LOVELY PROFESSIONAL UNIVERSITY (LPU)

Jalandhar-Delhi G.T. Road, Phagwara, Punjab (India) 144411

For General Enquiry: 01824-517000

Visit: www.lpu.in | Email: admissions@lpu.co.in

APPLY NOW

by scanning the
QR Code below



The information provided in this Brochure is a general proposal and not a commitment/ confirmation of any type. If the information available on the University website under the head Admissions i.e. <https://www.lpu.in/admission/> or Prospectus 2024 differs from the information provided in this Brochure, then the information available on the University website (under the head Admissions) or Prospectus 2024 or subsequent Corrigendum will prevail.